

Germany

Weidmüller GmbH & Co.
(33 058) Postfach 28 07, (33 102) An der Talle 89, Paderborn
Tel. +49 5252 960-0 · Fax +49 5252 960-116

Switzerland

Weidmüller Schweiz AG
Rundbuckstraße 2,
8212 Neuhausen am Rheinfall
Tel. +41 52 6740707 · Fax +41 52 6740708

Great Britain

Weidmüller Ltd.
1 Abbey Wood Road, Kings Hill
West Malling, Kent ME19 4YT
Tel. +44 1732 877066 · Fax +44 1732 873873

France

Weidmüller Sarl
12, Chaussée Jules César, B.P. 263 Osny.
95523 CERGY PONTOISE Cedex
Tel. +33 1 34245500 · Fax +33 1 34245501

Italy

Weidmüller S.r.l.
Via Albert Einstein 4, 20092 Cinisello Balsamo, Milano
Tel. +39 02 66068-1 · Fax +39 02 6124945

Spain

Weidmüller S. A.
Narcís Monturiol 11-13, Pol.Ind. N° 1
08960 Sant Just Desvern, Barcelona
Tel. +34 93 3722061 · Fax +34 93 3718055

Sweden

Weidmüller AB
Stockholm, Skebokvarnsvägen 370, 124 50 Bandhagen
Tel. +46 8 7272300 · Fax +46 8 7272480

USA

Weidmüller
821 Southlake Boulevard, Richmond, Virginia 23236
Tel. +1 804 7942877 · Fax +1 804 3792593

Other countries

Weidmüller Interface GmbH & Co. KG
Postfach 3030 · 32720 Detmold
Tel. +49 5231 14-0 · Fax +49 5231 14-20 83

Weidmüller



Operating instructions

CP SNT switched-mode power supply



CP SNT 70 W 24 V 3 A **8708660000**

CP SNT 120 W 24 V 5 A **8708670000**

CP SNT 250 W 24 V 10 A **8708680000**

R.T.Nr. 5635940000/03.03

**Please read this information carefully before installing the product.
This information should be retained for future reference.**

1. General notes

Warning! Power supplies must be installed by **qualified** personnel only.
Non observance of valid rules and regulations can lead to damage to property and physical injury, or even death.

2. Connections

Input: L, N ~ 100...240 V, 50/60 Hz, PE.
Back-up fuse: cable protection according to regulation min. 10 A C

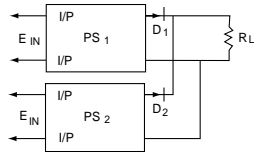
Output: Voltage: = 24 V, +/- 1 % (factory set)
Max. current: 3 A 8708660000
5 A 8708670000
10 A 8708680000
Voltage indication: LED green

3. Parallel connection

When connecting the same type in parallel, the output voltages are to be set to ± 50 mV of one another.

The + and – output lines are to be connected with litz conductors of the same length and connected according to the circuit diagram.

Use diodes with appropriate current load-carrying capacity and ensure sufficient cooling.



4. Approvals and markings



EN 60950



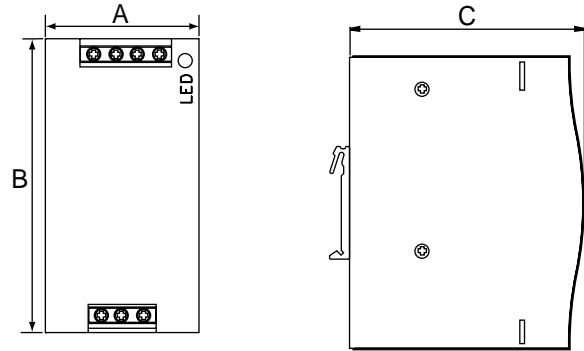
UL 508.

These devices correspond to the European EMC and Low Voltage Directives and are suitable for use in both industrial estates and residential areas. The EU Declarations of Conformity are held available for the responsible authorities in accordance with Article 10 of the above mentioned EU guidelines at: Weidmüller Interface GmbH & Co. KG

5. Mounting instructions

The device is designed for mounting onto 35 mm DIN mounting rails. To guarantee convection cooling the following amount of space must be kept free: 100 mm above and below the device, 20 mm at the sides. Do not cover ventilation openings.

6. Dimensions and tightening torques.



| Dimensions | A | B | C |
|--------------------|----------------|---------------------------------|-----|
| 70 Watt | 55,5 | 125 | 108 |
| 120 Watt | 65,5 | 125 | 129 |
| 250 Watt | 125,5 | 125 | 133 |
| tightening torques | cable diameter | | |
| 70, 120, 250 Watt | 0,4 - 0,5 Nm | max. 4 mm ² , AWG 10 | |

7. Miscellaneous

We constantly endeavour to improve our products in line with our policy on customer satisfaction. We would be pleased to receive your requests and ideas.